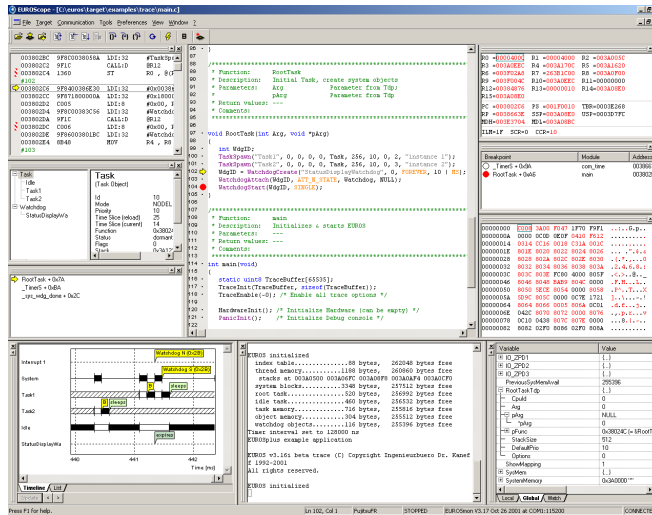


Source Level Debugger for Embedded Systems



EUROScope is a source-level debugger for embedded systems. Apart from the "usual" features like memory view, register view, assembler view, source view, local/global variable view, breakpoints and call-stack, EUROScope offers an integrated terminal window as well as support for programming Flash chips within the target system.

EUROScope offers syntax highlighting for C/C++ source code, and additional keywords can be added by the user.

Optimized target connections

The connection to the target system strongly influences turnaround times. EUROScope and its communication partner EUROSmon use intelligent algorithms, e.g. to optimize software downloads to the target system: even with slow serial target links data is often transferred faster than with comparable products. EUROScope supports serial interfaces, TCP/IP sockets and CAN (IXXAT VCI). BDM or JTAG are supported by add-on DLLs.

Common user interface for all architectures

You're developing for multiple target architectures? With EUROScope you don't have to learn a new debugger when you switch CPUs! Whether you use Infineon C16x, Fujitsu F16LX, Fujitsu FR, ARM, Intel x86, Mitsubishi M16C or PowerPC, all are supported by EUROScope!

"State of the Art" GUI

The sophisticated user interface helps you keep track of every important piece of information: windows can be "docked" to the edge of the main window and don't obscure important data. Multithreading makes the user interface highly responsive and a joy to work with.

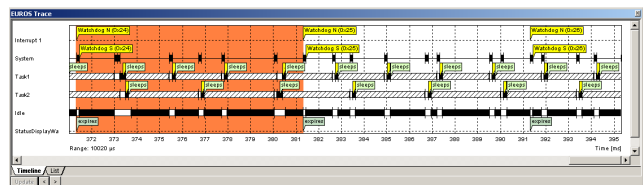
EUROS support

EUROScope is the ideal debugging partner when developing EUROS applications: it knows when the EUROS real-time operating system is running on the target system and offers the following enhanced features:

EUROS object view

You want to know which tasks are waiting for a message to a certain mailbox? You want to see if a driver is currently receiving data or where the stack of a task is located in memory? The EUROS object view delivers detailed information!

Event visualisation



As an option EUROScope can process information provided by a instrumented version of EUROS: You gain detailed insights into the runtime behaviour of your application and can thus detect and correct performance problems early on! Or add trace points to your software to record important data. The trace buffer in the target system helps you to re-trace the behaviour of your application, including its interrupt handlers, during post-mortem analysis!

EUROS Embedded Systems GmbH
 Campestr 12 | D-90419 Nuremberg | Germany
 Fon: +49 911 300 328 - 0 | Fax: -9
 info@euROS-embedded.com | www.euROS-embedded.com